

## Ecolink Highbay

IP65  
Water Resistant

Wide Beam Light  
110 deg.

Up to 22,000lm light  
output

IK06  
Impact Resistant

3 Year Warranty

ECOLINK Highbay is an efficient and reliable LED luminaire. Designed for point to point replacement of conventional HPI 250W/400W luminaires, it offers the benefit of energy efficiency, less maintenance and long lifetime.

### Benefits:

- Long lifetime (30,000 hours)
- Guaranteed luminous flux and durability.
- Energy-Efficient.
- Excellent light quality

### Product data

#### Optical system

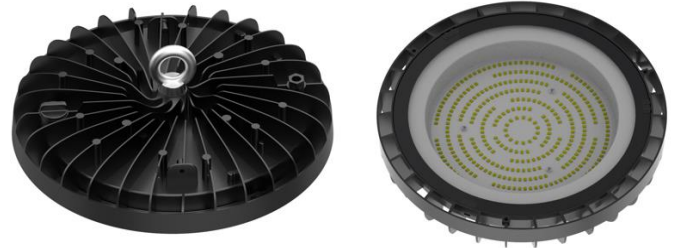
Lumen output (typ.Avg)	100W : 11000lm 150W : 16500lm 200W : 22000lm
lumen output tolerance (+/-)	±10%
CRI	>70
CCT	CW (6500K)
SDCM	≤6
Color over angle	Wide Beam
Beam Angle	WB (110° ±10%)

#### Electronics

Driver	Integrated Driver
Input Voltage and Frequency	220~240, 50/60hz;
Safety Class (driver+system)	Class I
Fuse	YES
Power Factor (system)	>0.9
Power consumption (system)	100W, 150W, 200W(-10%, +2.5%)
System Efficacy	110 lm/W @ 4000K
THD	<20%
Surge Protection	1kv/2kv

#### Mechanical

Housing material	Aluminum Die-cast
Reflector/lens material (LG)	PC
Ring material (IPS)	Galvanized iron
IPxx	IP65
IKxx	IK06
Glow wiring rating	650 φ
Mounting	Suspension GM-M10 (Hook included)
Power connection	Flying cable
Cable	3*1.0 mm <sup>2</sup> , cable length 0.3M
Housing Surface Treatment	Powder coating
Color(s) (and RAL code)	Black RAL9005



Size (LxWxH) + considerations	100W: φ220*H50 (NO HOOK) 150W: φ260*H53 (NO HOOK) 200W: φ300*H54 (NO HOOK)
Weight (Kg)	100W: 0.9kgs 0.3m flying wire 150W: 1.4kg 0.3m flying wire 200W: 1.8kg 0.3m flying wire
Packaging concept	Industry package brown carton box 1pc/carton
<b>Thermal</b>	
Operating temperature range	-20°C~45°C (Ta35°C)
<b>Reliability</b>	
Lifetime	30,000hrs @ Ta35°C @ L70B50

### Product List

12 NC	Product Description
9114 018 28484	Ecolink HB007 G2 100W CW
9114 018 28284	Ecolink HB007 G2 150W CW
9114 018 28384	Ecolink HB007 G2 200W CW