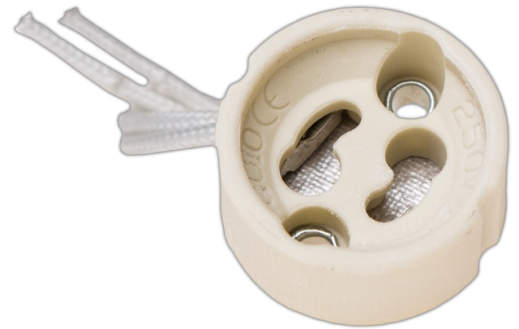


## Lampholder GU10. 2A 250V~. Ceramic.

The ceramic GU10 lamp holder is designed to ensure safe connection of GU10 lamps in electrical installations. It supports up to 250V~ and 2A. Made of white porcelain, it features a 150 mm silicone cable that provides excellent heat resistance and durability. Suitable for both domestic and professional applications.



### Features

Common applications	Indoor domestic / tertiary environment (Interior of home, offices, shops, etc.)
Material	Porcelain
Tension	250 V~
Electricity	2 A
Type of cable	Silicone
Longitud cable	150 mm
Color	White
Supplied thickness (mm)	silicona
Shrink diameter (mm)	150 mm

### Technical data

Free of halogens	Yes
------------------	-----

### Regulations

CE marking	Yes
UK marking	Yes
CMim marking	Yes
According to Regulations UNE/EN	UNE-EN 60061-2:2018
According to REBT	Yes
According to European Directive 2014/35 / EU. Low voltage directive	Yes

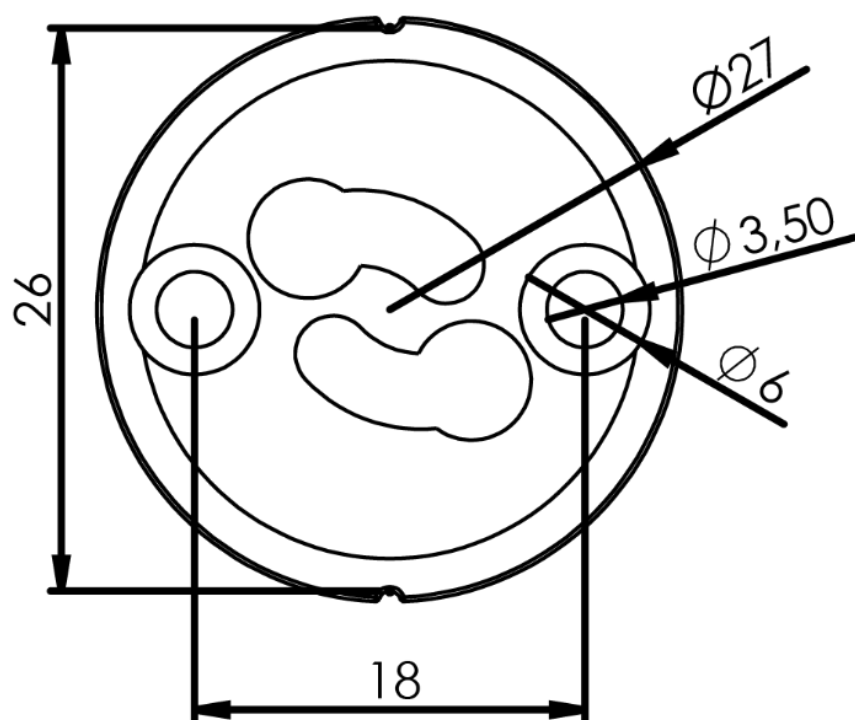
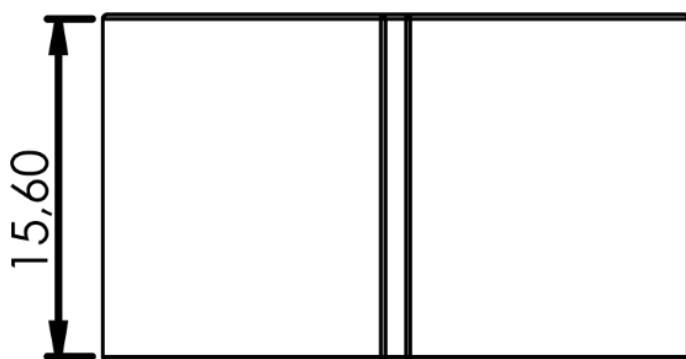
## Sustainability

According to European Directive 2011/65/UE (RoHS)	Yes
According to European Directive 2012/19/UE (RAEE2)	Yes
According to Regulations (RoHS)	UNE-EN IEC 63000:2022

## Logistics and packaging

Unit EAN code	8423220238381
EAN code container	8423220073326
EAN code packaging	18423220073323
Units packaging	100
Units carton	1000
Pallet Units	45000
Packaging Measurements cm	35x0,1x24
Packaging Measures cm	38x29x32,5
Unit weight (g)	16,2
Container Weight (Kg)	1,635
Packaging Weight (Kg)	16,985
Tariff code	85366110

## Sketch



## Documentation and downloads



[Safety Information \(0.91MB\)](#)