

Illustrative picture

SPECIFICS

<i>Description</i>	Product type	Movable plug low voltage 50/60 Hz IP44
	Article code	9215
	Commercial Series	SERIES 10 IEC 309 IP44

<i>General Data</i>	Poles	N° 3P+N+E	Type of material	Halogen free
	Current	A 16	Type of terminal	Screw PH2
	Voltage	V~ 200/346-240/415	Terminal inlet diameter	mm 3,7
	Earth contact position	h 6	Cable clamp tightening capacity	mm 6,5 - 15
	Degree of protection	IP 44	Dimensional stability	°C -25 /+70
	Impact Resistance	IK 8	Resistance glow wire test	°C +650 / +850
	Insulation Resistance	MΩ >10	Working temperature	°C -25 + 55
	Dimensions LxDxH	cm 12,5x8,7x8,7	Weight	kg 0,16

Behaviour with chemical and atmospheric agents											
Saline Solution	Acids		Bases		Solvents				Mineral Oil	UV rays	
	Concentrated	Diluted	Concentrated	Diluted	Hexane	Benzol	Acetone	Alcohol			
Resistant	Limited Resistant	Resistant	Resistant	Resistant	Limited Resistant	Limited Resistant	Resistant	Resistant	Resistant	Resistant	

<i>Standards</i>	CEI EN 60309-1	CEI EN 60309-2	2014/35/UE
------------------	----------------	----------------	------------

<i>Features package</i>	<i>Descriptions</i>		<i>N/pieces</i>	<i>Weight/kg</i>
	Article		1	0,16
	Package innerbox		8	1,37
	Packaging		120	21,17

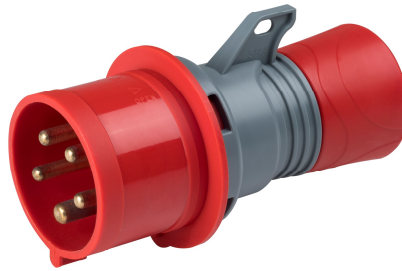
<i>Dimensions</i>		<table border="1"> <thead> <tr> <th rowspan="2">Amp Poles</th> <th colspan="3">16A</th> <th colspan="3">32A</th> </tr> <tr> <th>3</th> <th>4</th> <th>5</th> <th>3</th> <th>4</th> <th>5</th> </tr> </thead> <tbody> <tr> <td>A</td> <td>140</td> <td>140</td> <td>140</td> <td>161</td> <td>161</td> <td>161</td> </tr> <tr> <td>B</td> <td>106</td> <td>106</td> <td>106</td> <td>122,5</td> <td>122,5</td> <td>122,5</td> </tr> <tr> <td>C</td> <td>46,5</td> <td>53,5</td> <td>60,5</td> <td>62,5</td> <td>62,5</td> <td>69,5</td> </tr> <tr> <td>D</td> <td>56</td> <td>60,5</td> <td>68</td> <td>72</td> <td>72</td> <td>69</td> </tr> <tr> <td>E</td> <td>6-15</td> <td>6-15</td> <td>8-16</td> <td>11,5-20</td> <td>11,5-20</td> <td>11,5-22</td> </tr> </tbody> </table>						Amp Poles	16A			32A			3	4	5	3	4	5	A	140	140	140	161	161	161	B	106	106	106	122,5	122,5	122,5	C	46,5	53,5	60,5	62,5	62,5	69,5	D	56	60,5	68	72	72	69	E	6-15	6-15	8-16	11,5-20	11,5-20	11,5-22
		Amp Poles	16A			32A																																																	
			3	4	5	3	4	5																																															
		A	140	140	140	161	161	161																																															
		B	106	106	106	122,5	122,5	122,5																																															
		C	46,5	53,5	60,5	62,5	62,5	69,5																																															
		D	56	60,5	68	72	72	69																																															
E	6-15	6-15	8-16	11,5-20	11,5-20	11,5-22																																																	



Rev	Date	Technical Manager
01	7/1/20	Romano Rosi

CERTIFICATO N° 9105.RO53 - UNI EN ISO 9001:2015

Reg. A.E.E.n° IT17100000010057



Illustrative picture

SPECIFICS

<i>Description</i>	Product type	Movable plug low voltage 50/60 Hz IP44
	Article code	9415
	Commercial Series	SERIES 10 IEC 309 IP44

<i>General Data</i>	Poles	N° 3P+N+E	Type of material	Halogen free
	Current	A 32	Type of terminal	Screw PH2
	Voltage	V~ 200/346-240/415	Terminal inlet diameter	mm 4,6
	Earth contact position	h 6	Cable clamp tightening capacity	mm 11,5 - 20
	Degree of protection	IP 44	Dimensional stability	°C -25 /+70
	Impact Resistance	IK 8	Resistance glow wire test	°C +650 / +850
	Insulation Resistance	MΩ >10	Working temperature	°C -25 + 55
	Dimensions LxDxH	cm 15,2x7x7	Weight	kg 0,251

Behaviour with chemical and atmospheric agents											
Saline Solution	Acids		Bases		Solvents				Mineral Oil	UV rays	
	Concentrated	Diluted	Concentrated	Diluted	Hexane	Benzol	Acetone	Alcohol			
Resistant	Limited Resistant	Resistant	Resistant	Resistant	Limited Resistant	Limited Resistant	Resistant	Resistant	Resistant	Resistant	

<i>Standards</i>	CEI EN 60309-1	CEI EN 60309-2	2014/35/UE
------------------	----------------	----------------	------------

<i>Features package</i>	<i>Descriptions</i>		<i>N/pieces</i>	<i>Weight/kg</i>
	Article		1	0,251
	Package innerbox		4	1,094
	Packaging		60	17,03

<i>Dimensions</i>									
		Amp		16A			32A		
		Poles	3	4	5	3	4	5	
		A	140	140	140	161	161	161	
		B	106	106	106	122.5	122.5	122.5	
		C	46.5	53.5	60.5	62.5	62.5	69.5	
		D	56	60.5	68	72	72	69	
E	6-15	6-15	8-16	11.5-20	11.5-20	11.5-22			



CERTIFICATO N° 9105.RO33 - UNI EN ISO 9001:2015

Reg. A.E.E. n° IT17100000010057